



TOWARDS A BETTER UNDERSTANDING OF HUMAN- WILDLIFE INTERACTIONS IN BELGIAN NATIONAL PARKS

THE POTENTIAL OF SOCIAL MEDIA & MOBILE PHONE DATA COMBINED WITH CAMERA TRAPS

Wim Kuypers

Prof. dr. Natalie Beenaerts

Prof. dr. Nicolas Dendoncker

Dr. ir. Jim Casaer



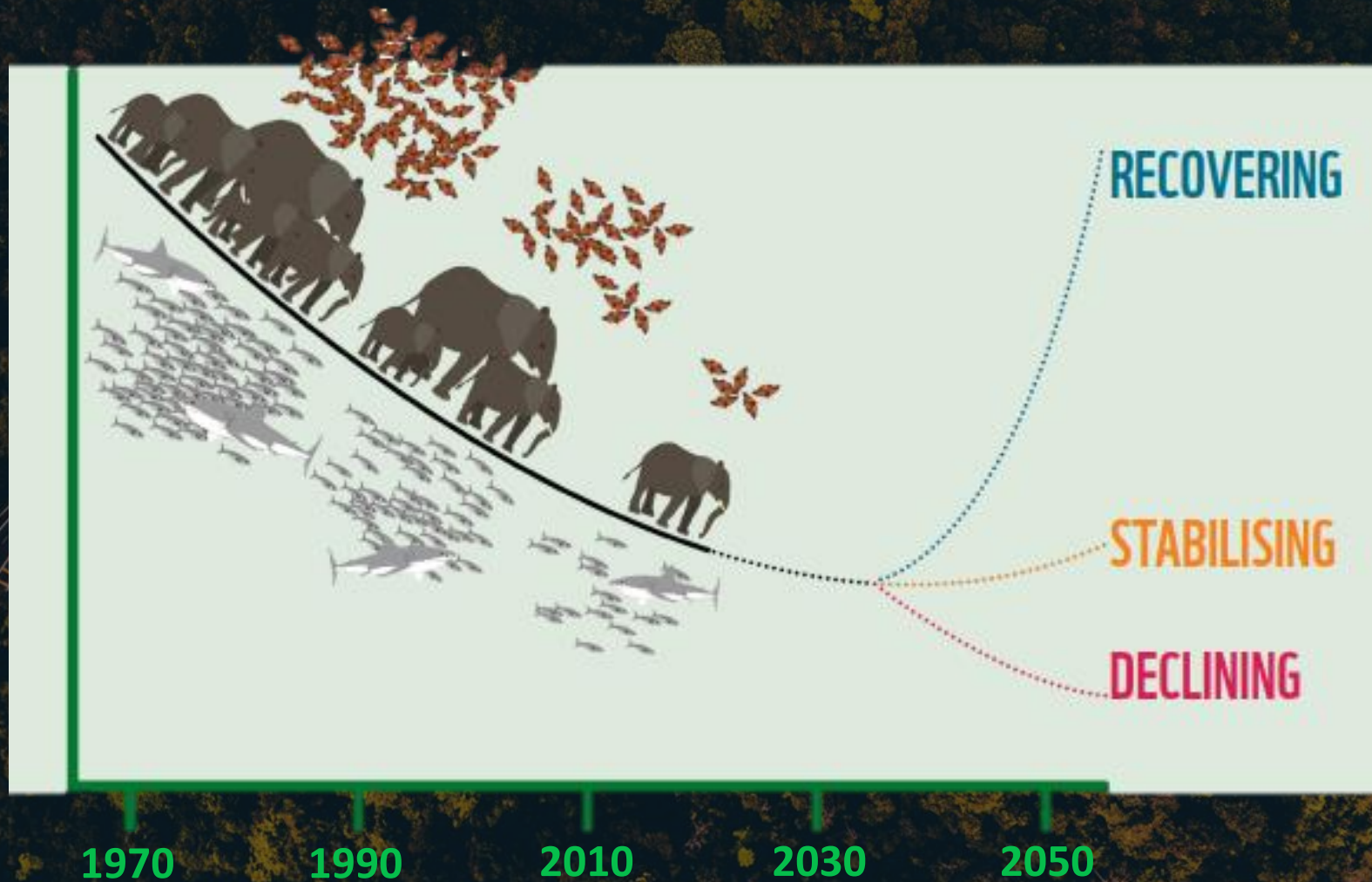
ChatGPT

THE IMPORTANCE OF RECREATION MONITORING

CHALLENGES FOR NATIONAL PARKS



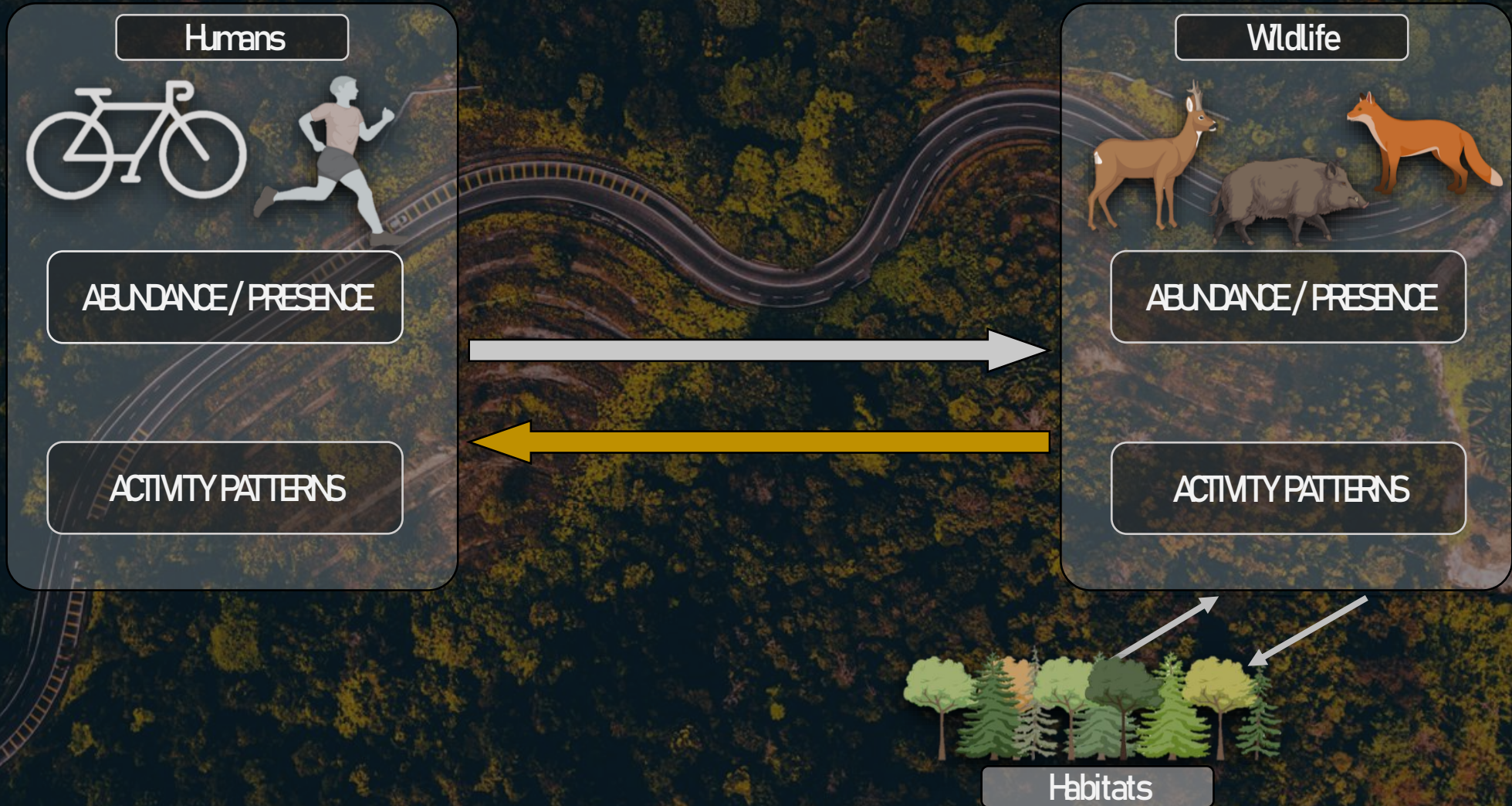
THE IMPORTANCE OF WILDLIFE MONITORING



THE IMPORTANCE OF WILDLIFE MONITORING



UNDERSTANDING HUMAN-WILDLIFE INTERACTIONS



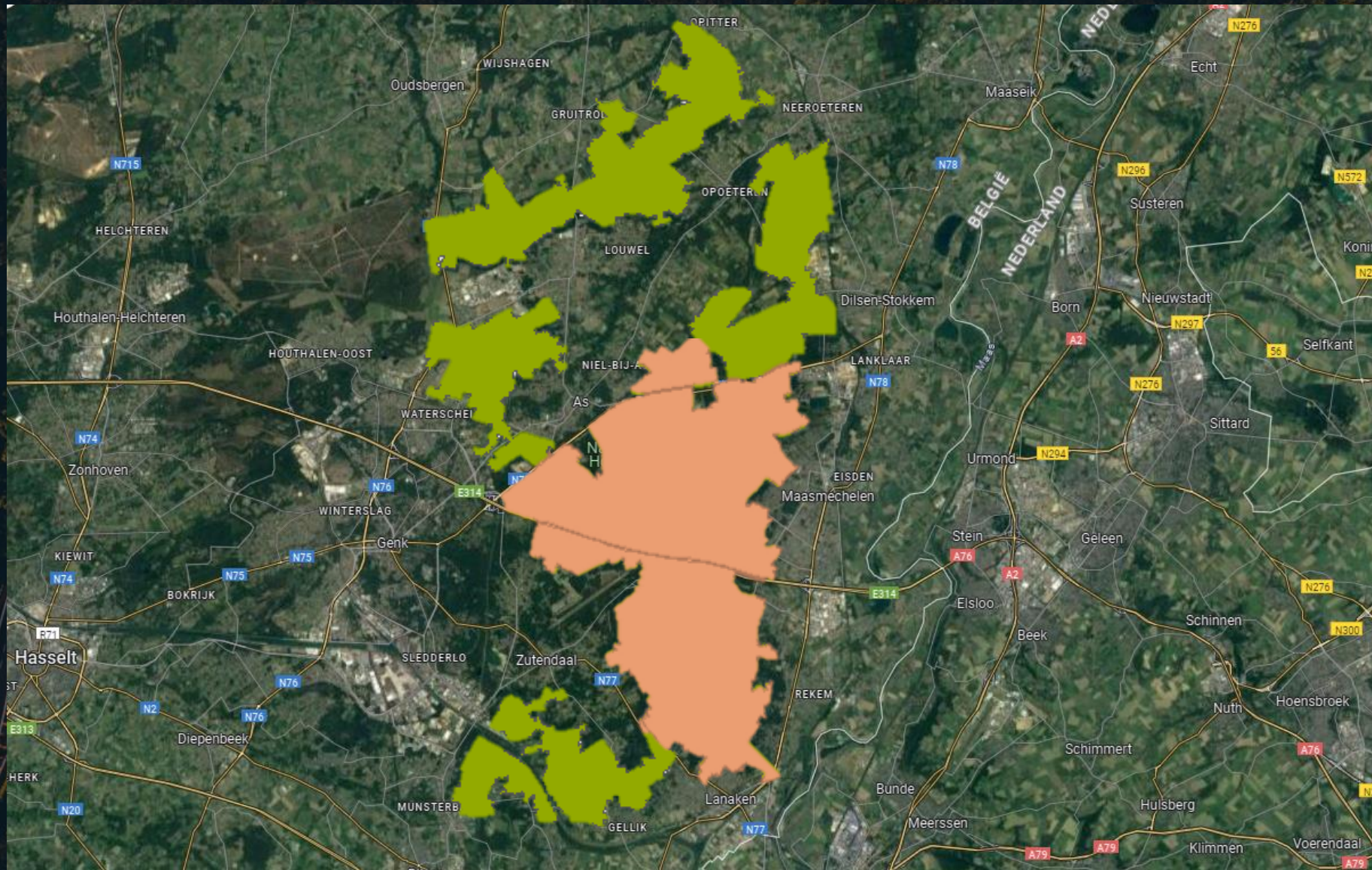
UNDERSTANDING HUMAN-WILDLIFE INTERACTIONS IN CONTRASTED PROTECTED AREAS



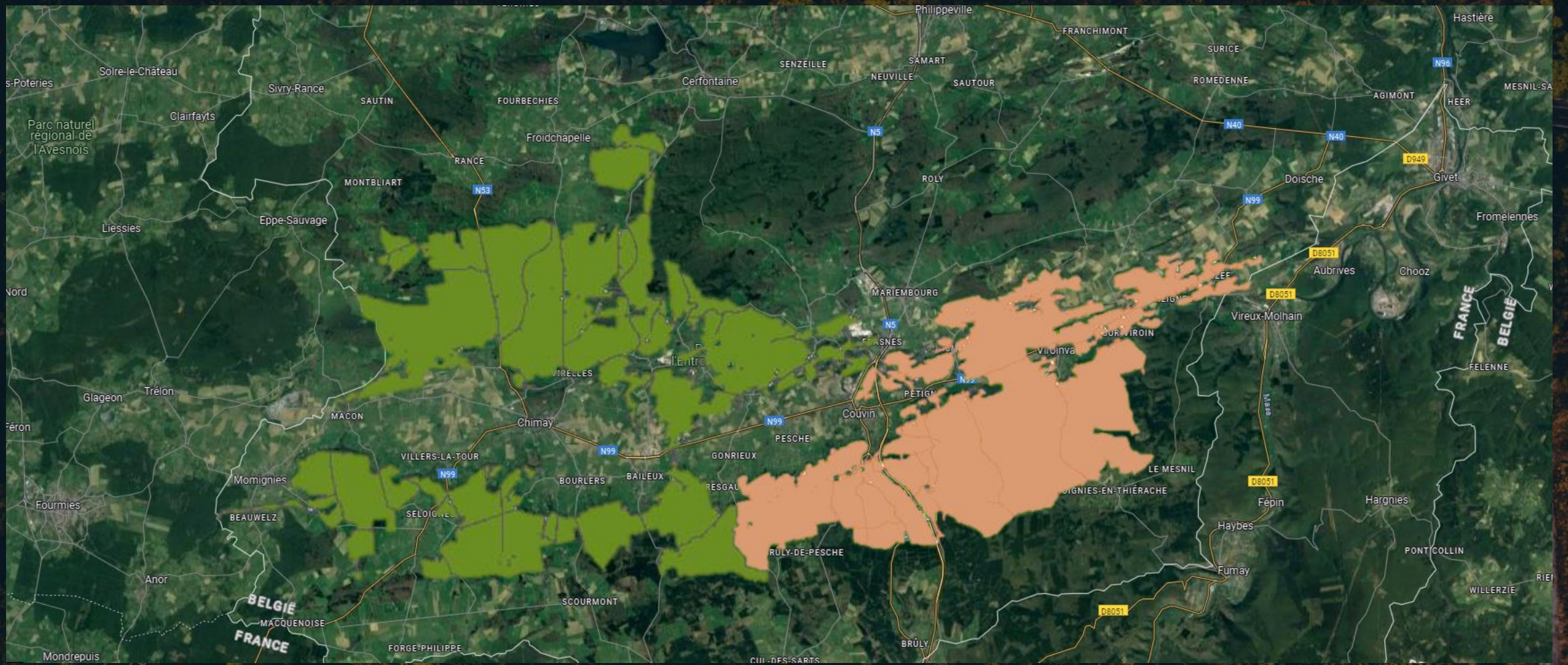
HOGHE KEMPEN (12,000 ha)

ENTRE-SAMBRE-ET-MEUSE (22,129 ha)

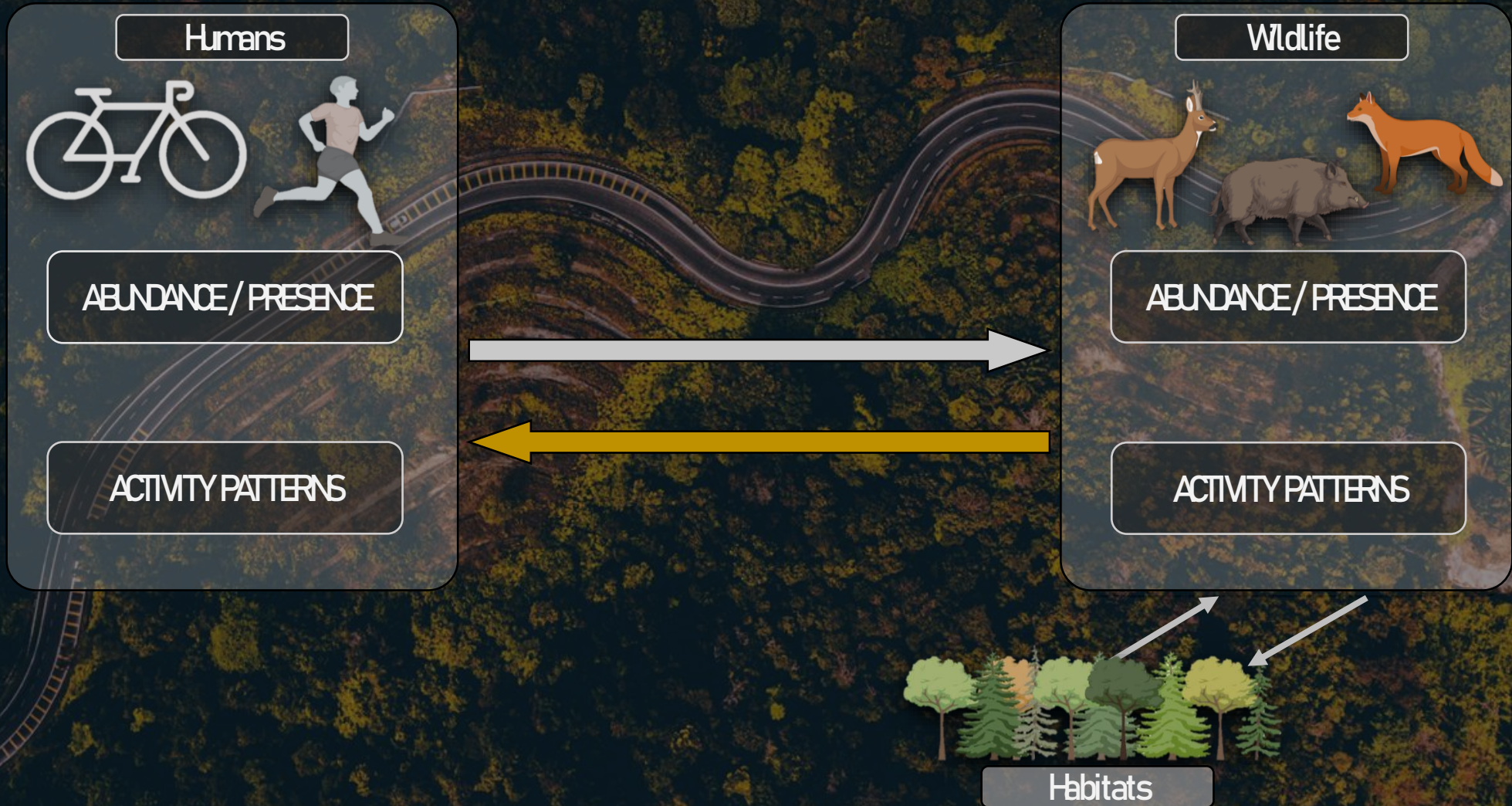
Hoge Kempen National Park



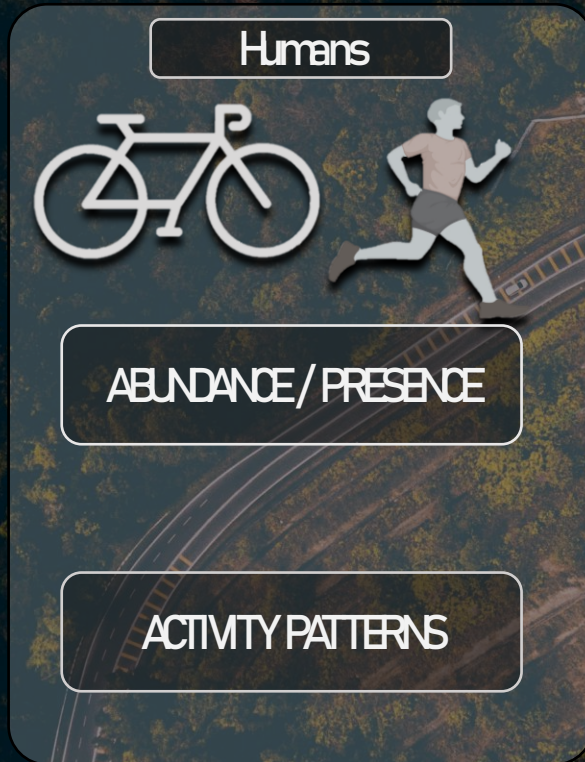
Entre-Sambre-et-Meuse National Park



UNDERSTANDING HUMAN-WILDLIFE INTERACTIONS



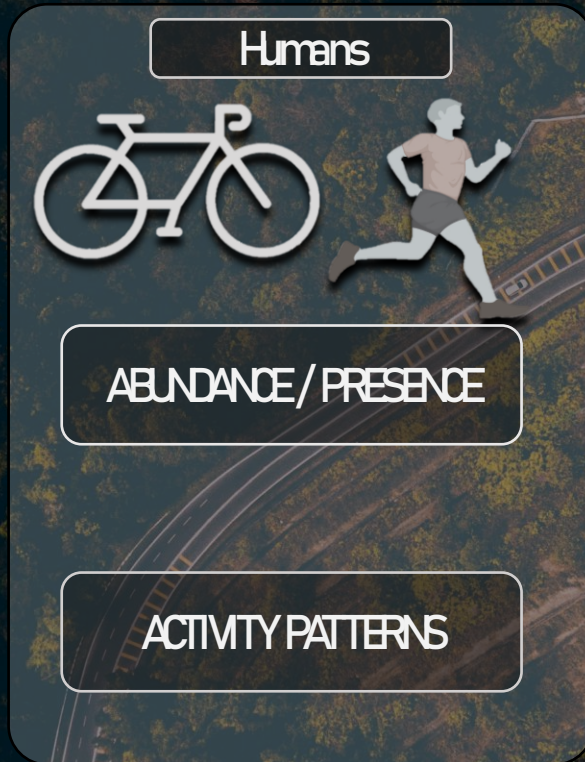
1. ASSESSING THE SPATIOTEMPORAL USE OF HUMANS



- Social media data



1. ASSESSING THE SPATIOTEMPORAL USE OF HUMANS



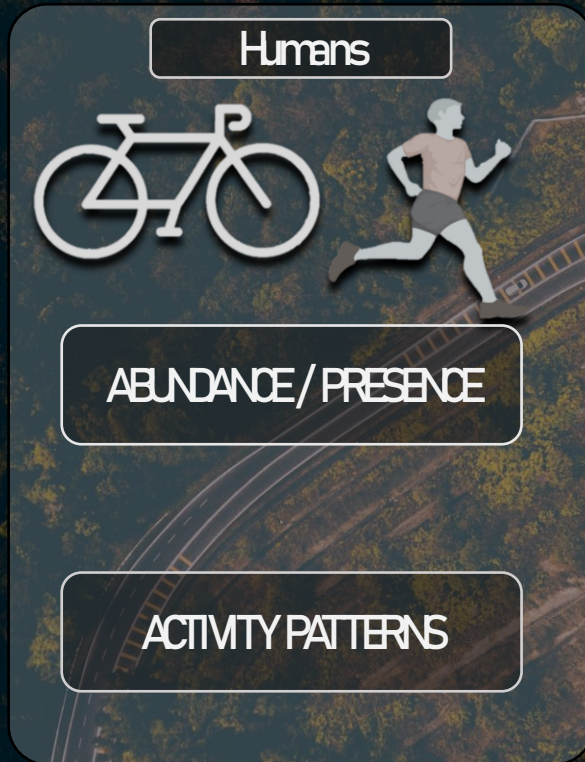
- Social media data



- Mobile phone data



1. ASSESSING THE SPATIOTEMPORAL USE OF HUMANS



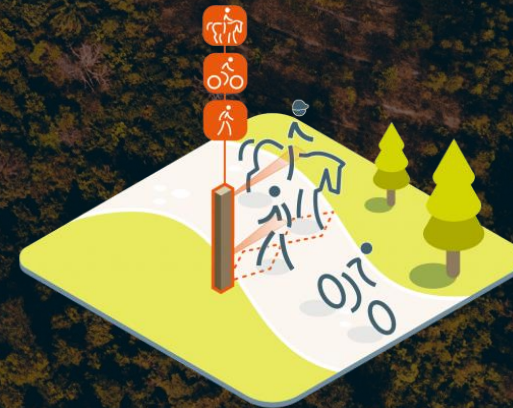
- Social media data



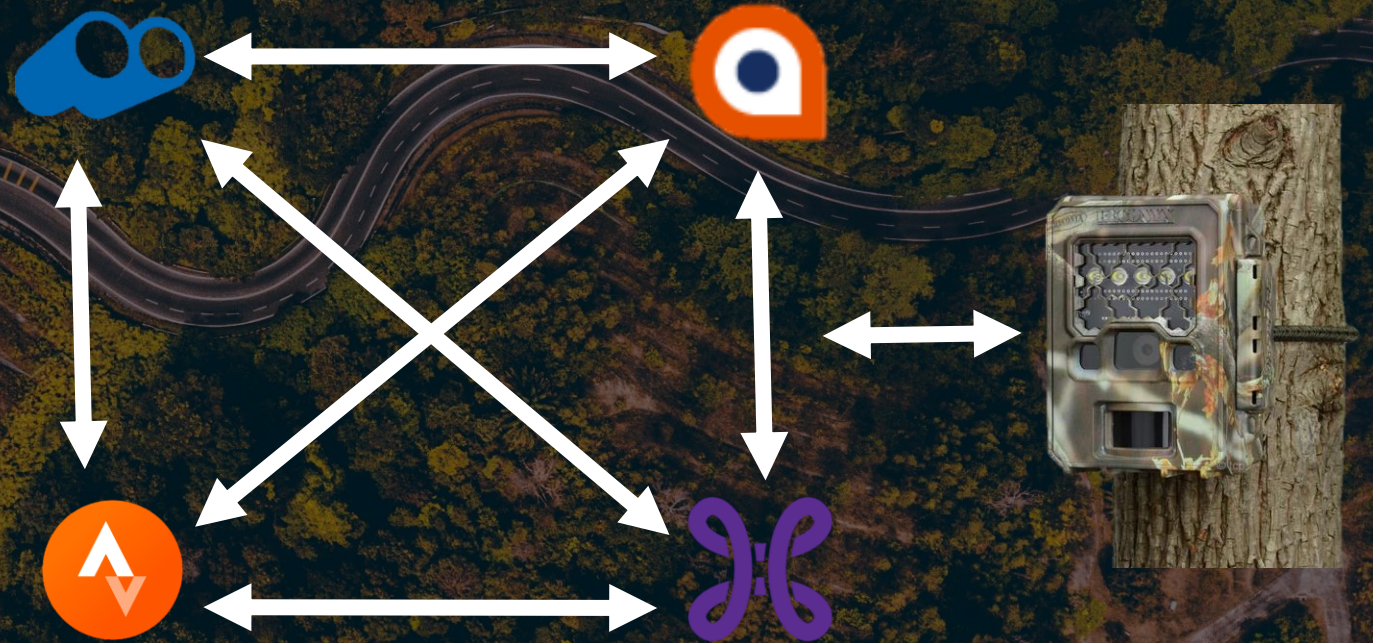
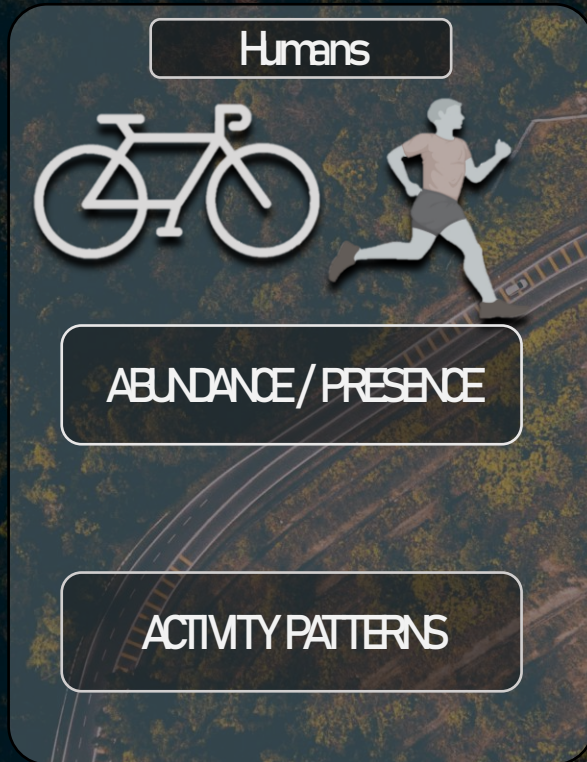
- Mobile phone data



- Visitor counters



1. ASSESSING THE SPATIOTEMPORAL USE OF HUMANS



LOCATIONS OBSERVATIONS BE 2022

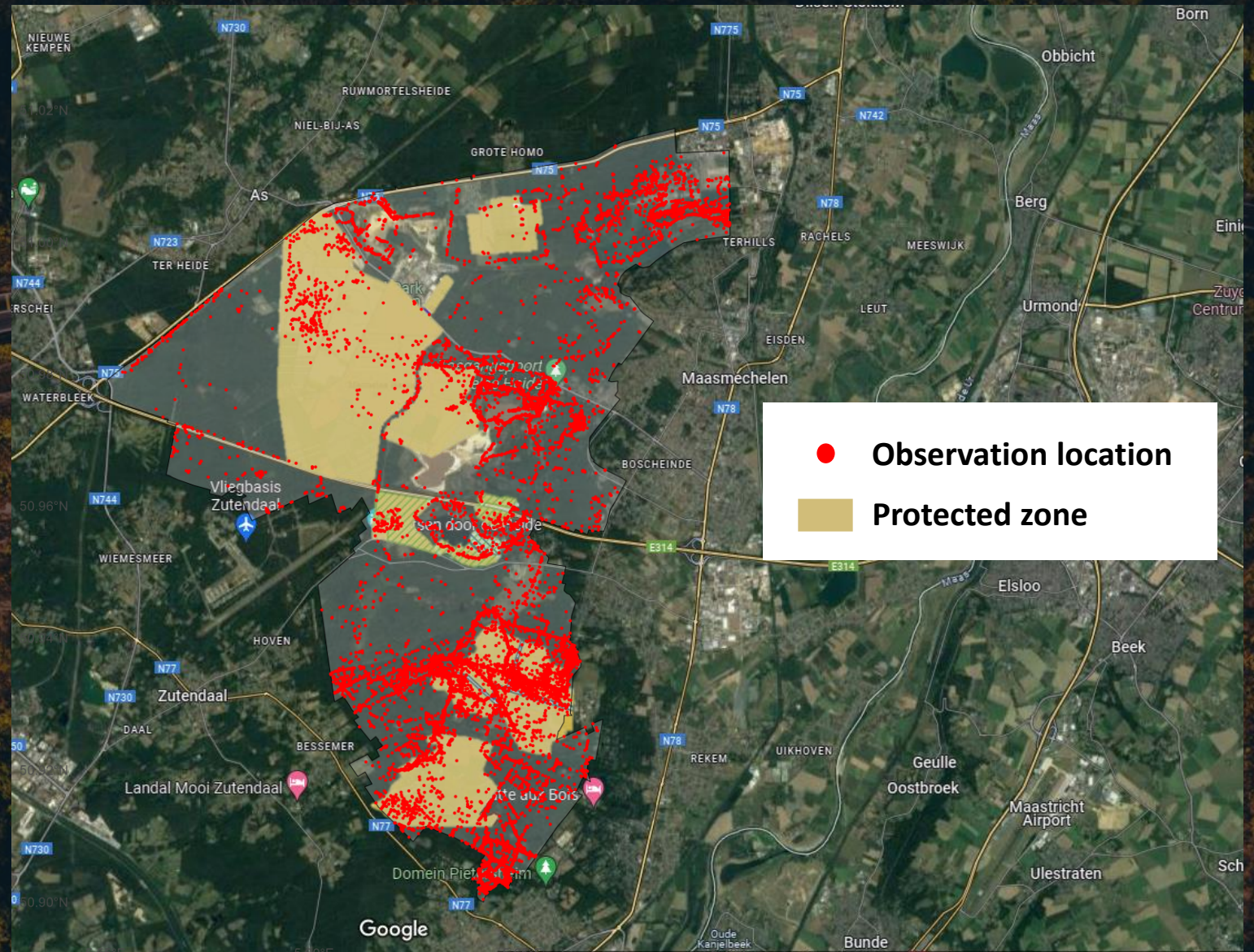


Humans



ABUNDANCE/PRESENCE

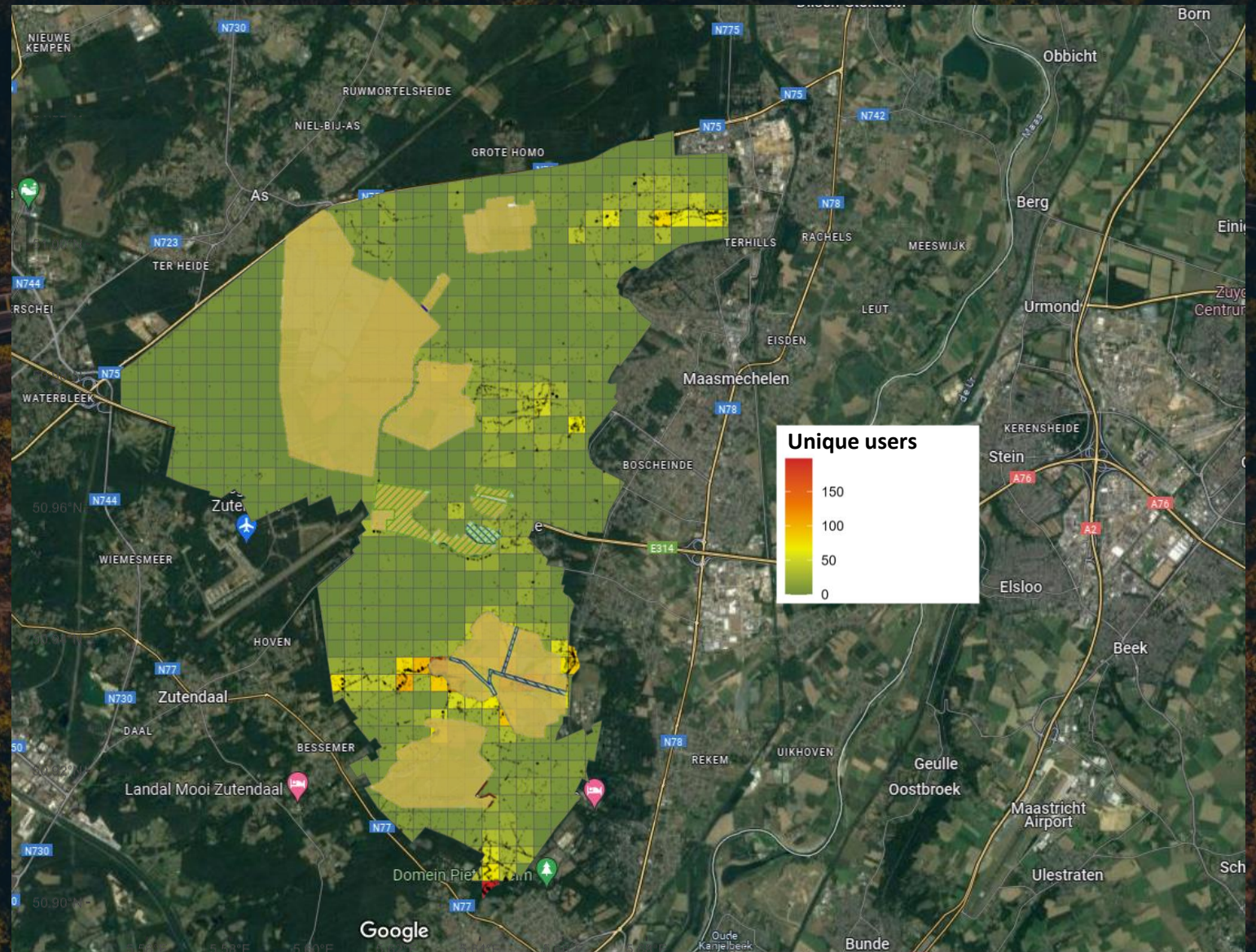
ACTIVITY PATTERNS





An illustration featuring a white bicycle on the left and a stylized runner in a light blue shirt and dark shorts on the right, set against a dark, textured background.

ACTIVITY PATTERNS



UNIQUE USERS PER GRID CELL OBSERVATIONS BE 2022

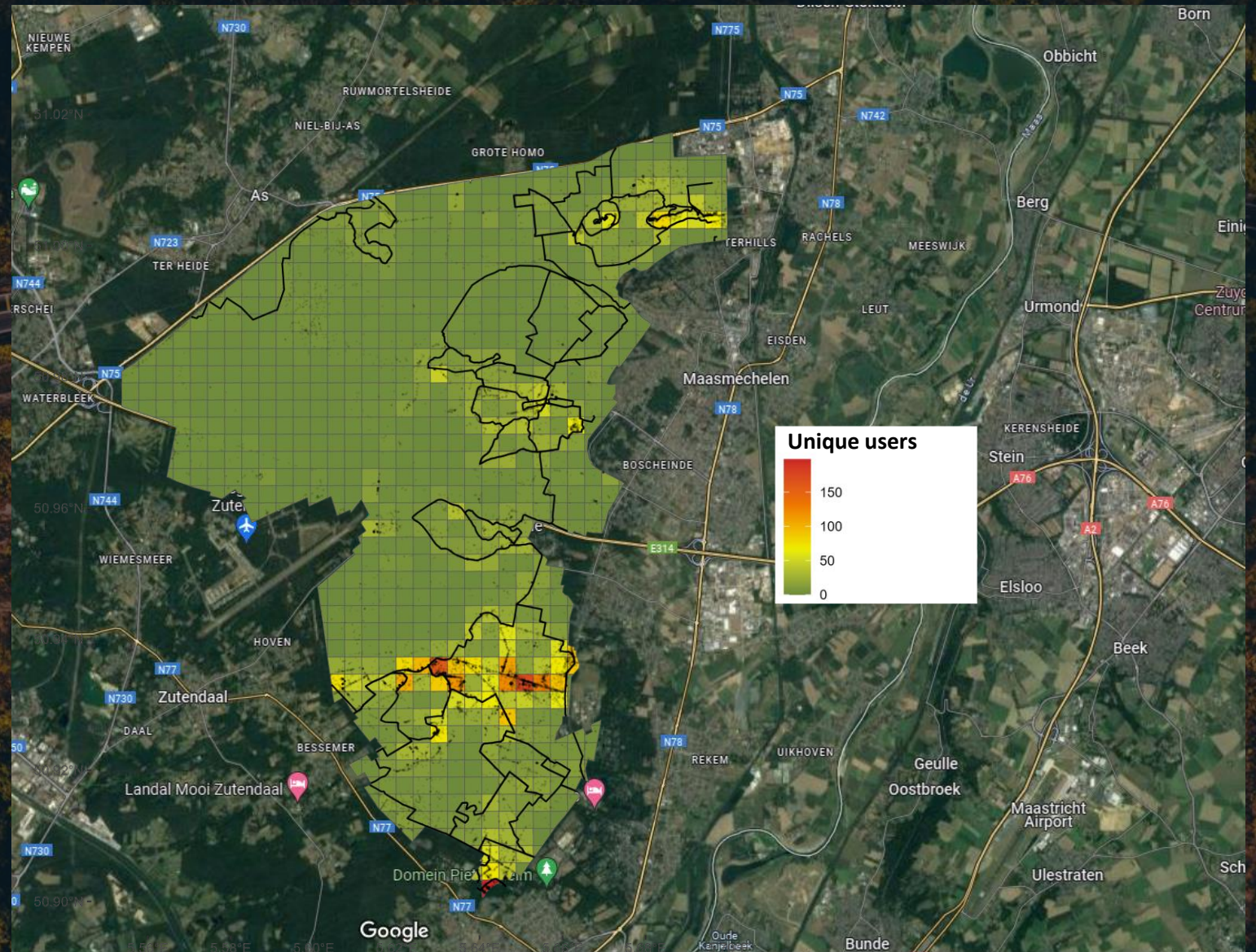


Humans



ABUNDANCE/PRESENCE

ACTIVITY PATTERNS



STRAVA AVERAGE DAILY TRIP COUNT AUGUST 2022

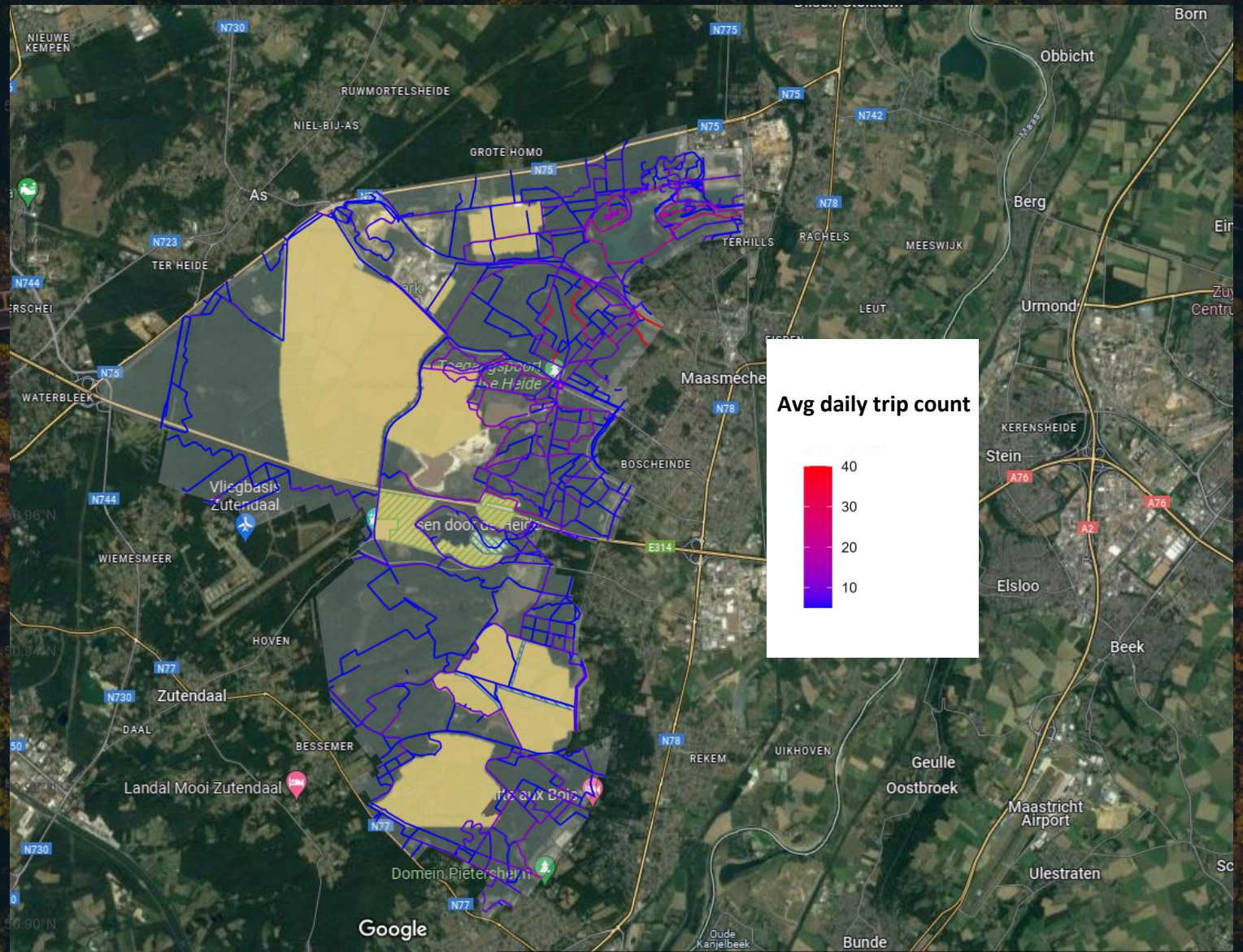


Humans

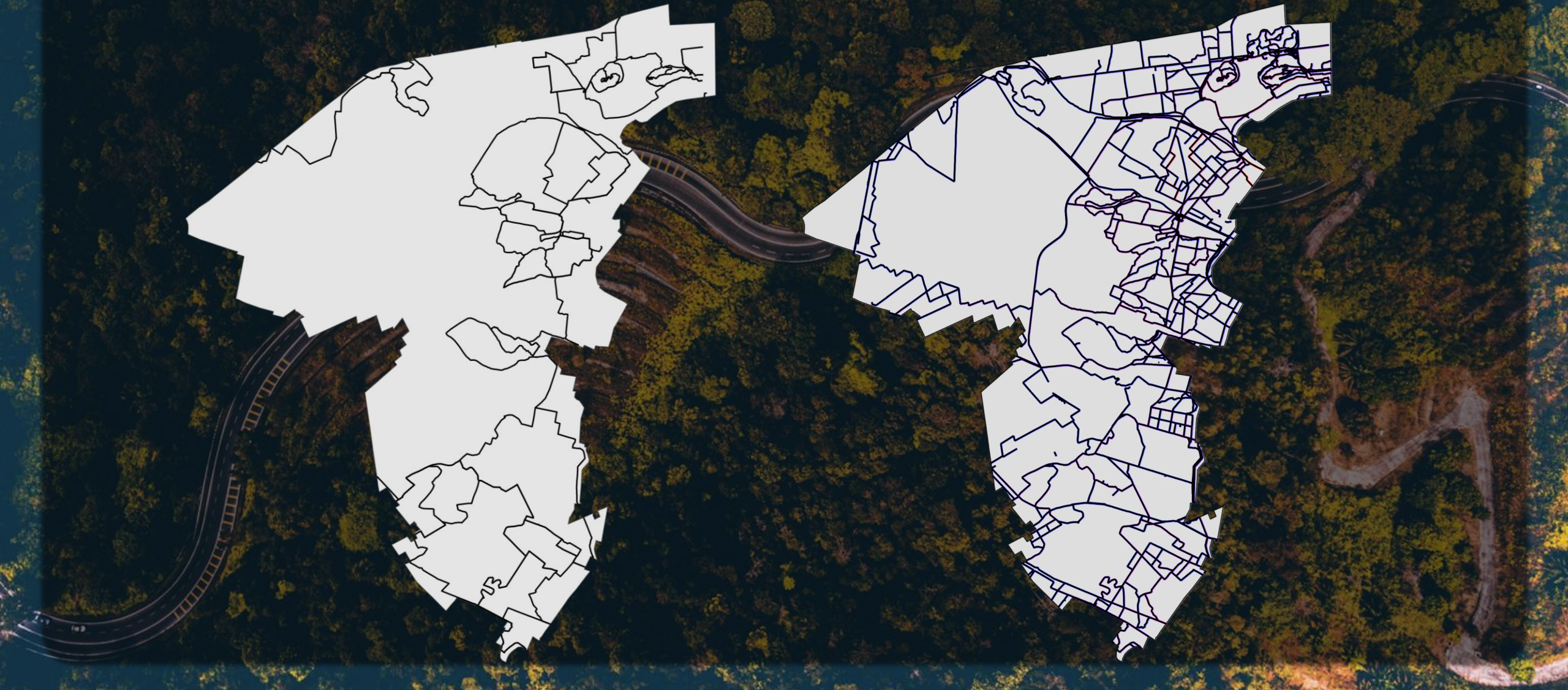


ABUNDANCE/PRESENCE

ACTIVITY PATTERNS



MARKED HIKING TRAILS vs STRAVA HIKING/RUNNING DATA AUGUST 2022



2. ASSESSING THE SPATIOTEMPORAL USE OF WILDLIFE, INCLUDING THEIR ECOLOGICAL HABITAT CHARACTERISTICS



- 40 Camera Traps NPHK

- 40 Camera Traps NPESEM



2019-08-25 4:29:28 PM M 3/10

0 29°C



NPHK4



2018-03-05 12:24:55 PM M 1/10



9°C



NPHK34

RECONYX

2018-03-20 7:12:12 AM M 3/10

0 -1°C



NPHK24



2018-08-18 12:10:11 PM M 10/10

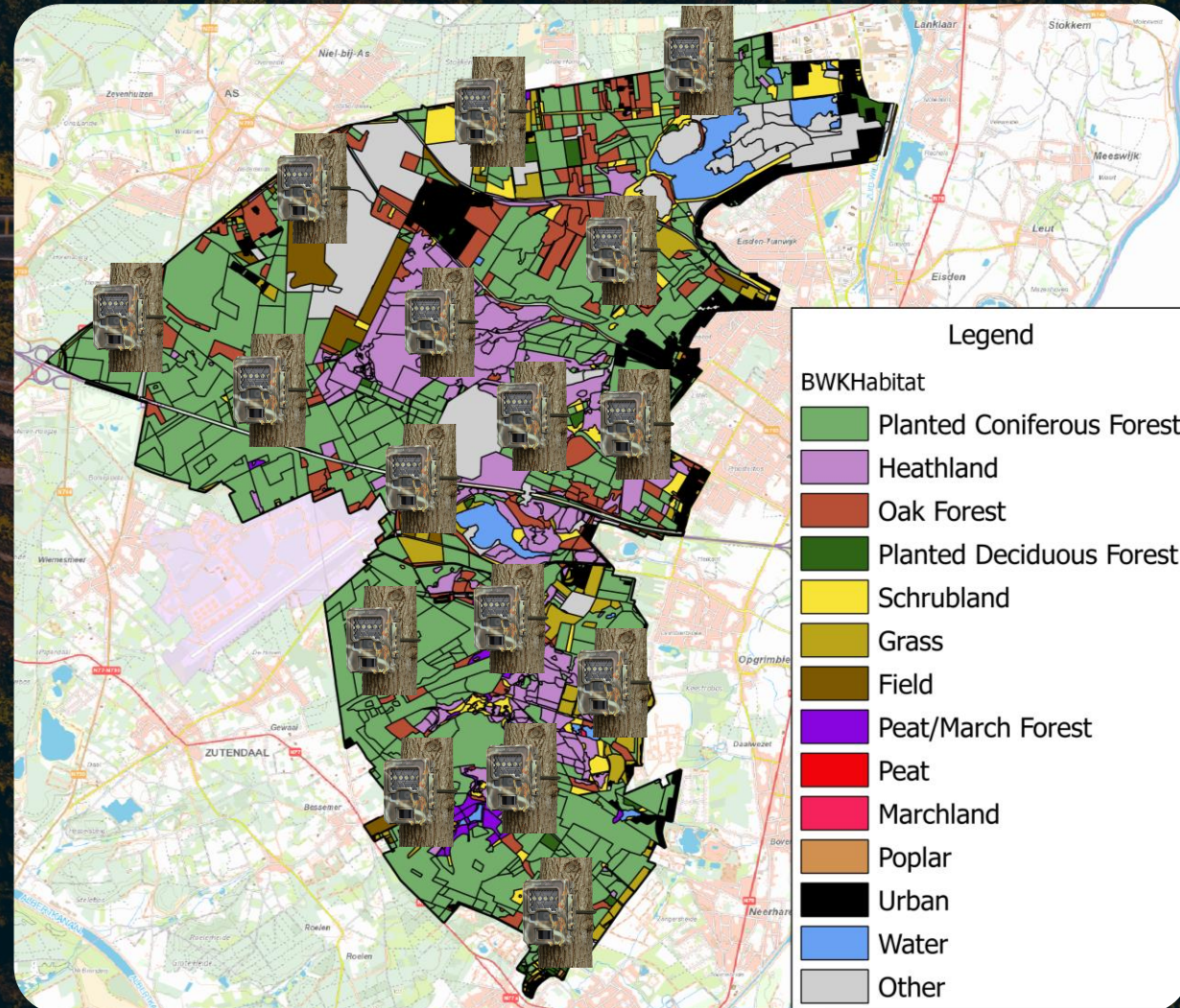
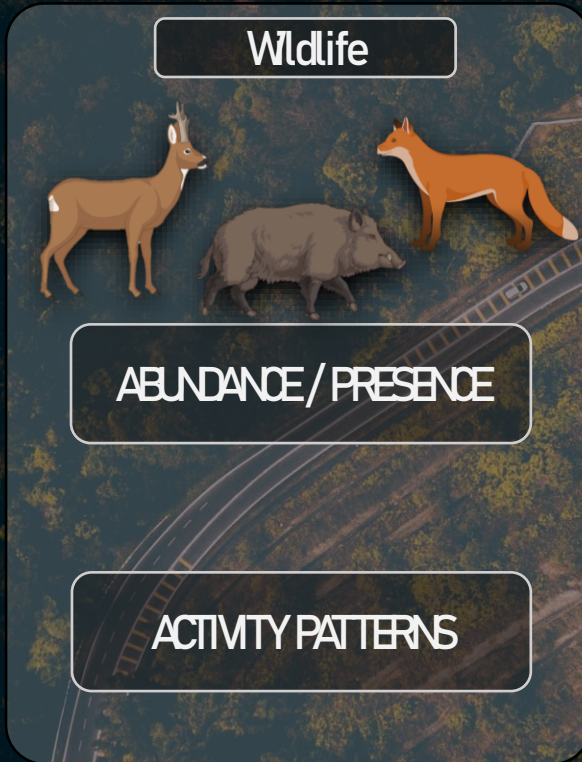
25°C



NPHK23

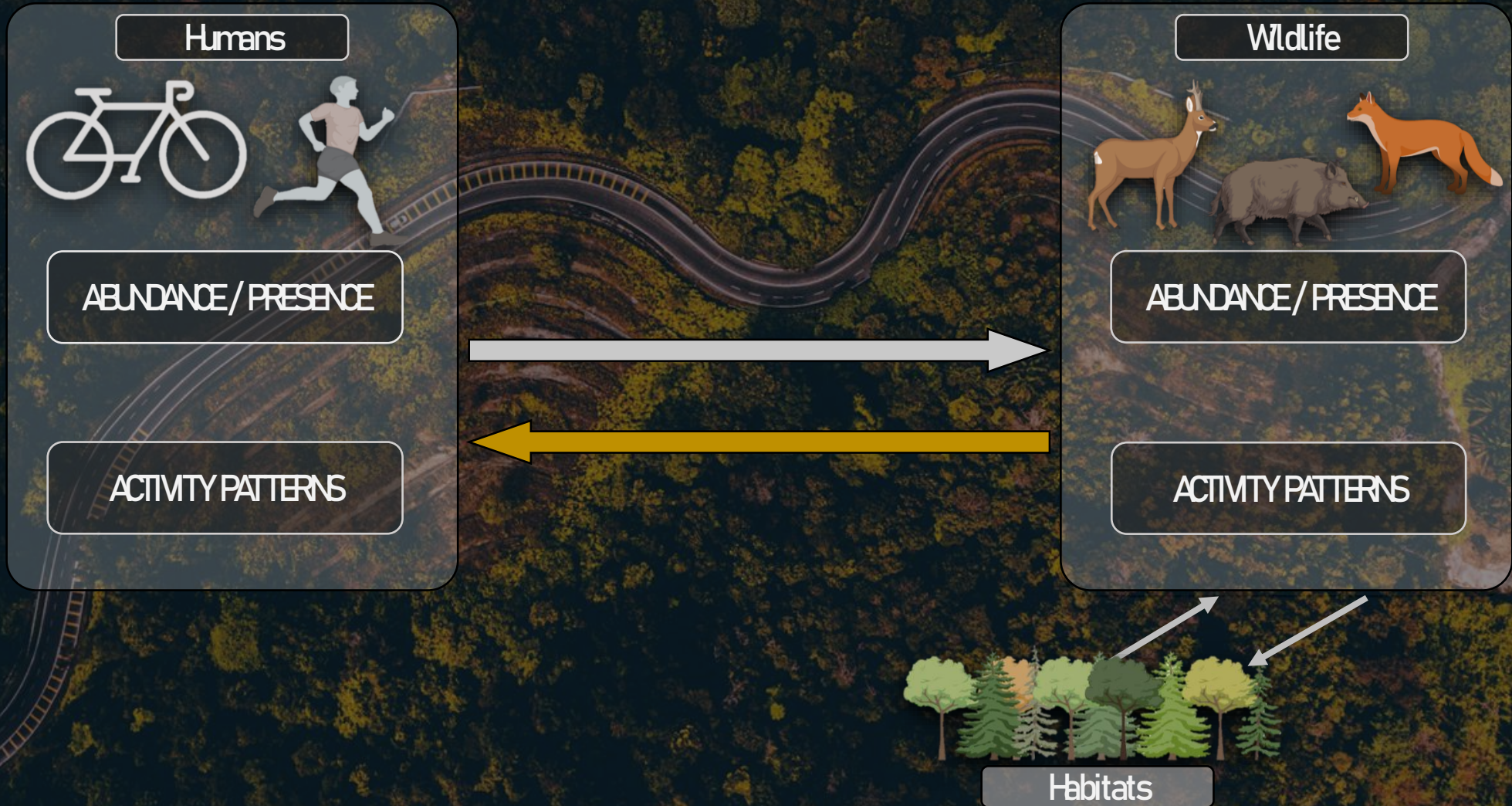
RECONYX

2 ASSESSING THE SPATIOTEMPORAL USE OF WILDLIFE, INCLUDING THEIR ECOLOGICAL HABITAT CHARACTERISTICS



Habitats

UNDERSTANDING HUMAN-WILDLIFE INTERACTIONS





TOWARDS A BETTER UNDERSTANDING OF HUMAN- WILDLIFE INTERACTIONS IN BELGIAN NATIONAL PARKS

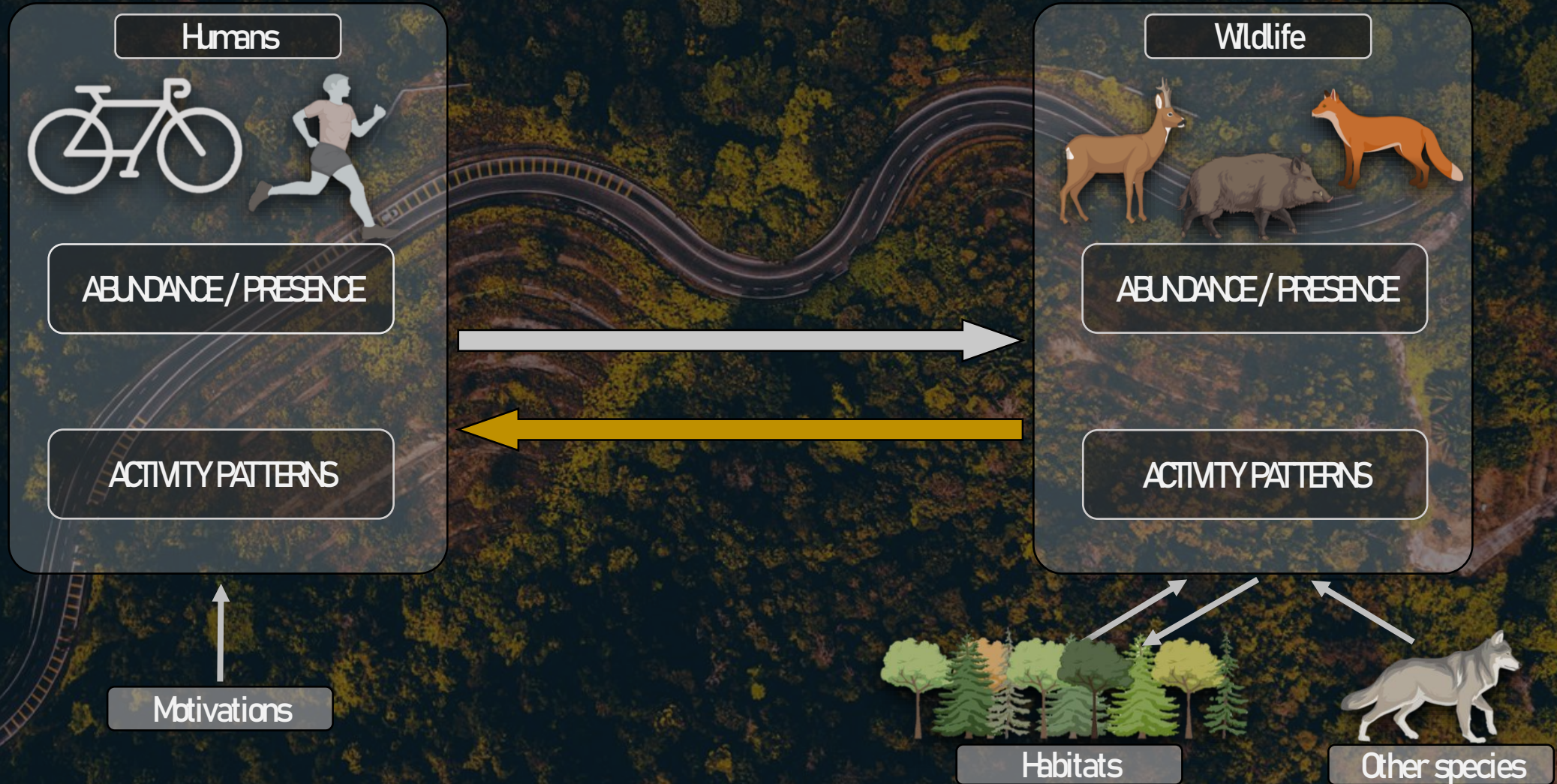
THE POTENTIAL OF SOCIAL MEDIA & MOBILE PHONE DATA AND CAMERA TRAPS

CONTACT:

 wimkuypers@uhasselt.be

 Wm Kuypers

UNDERSTANDING HUMAN-WILDLIFE INTERACTIONS



SOCIAL MEDIA DATA – OBSERVATIONS

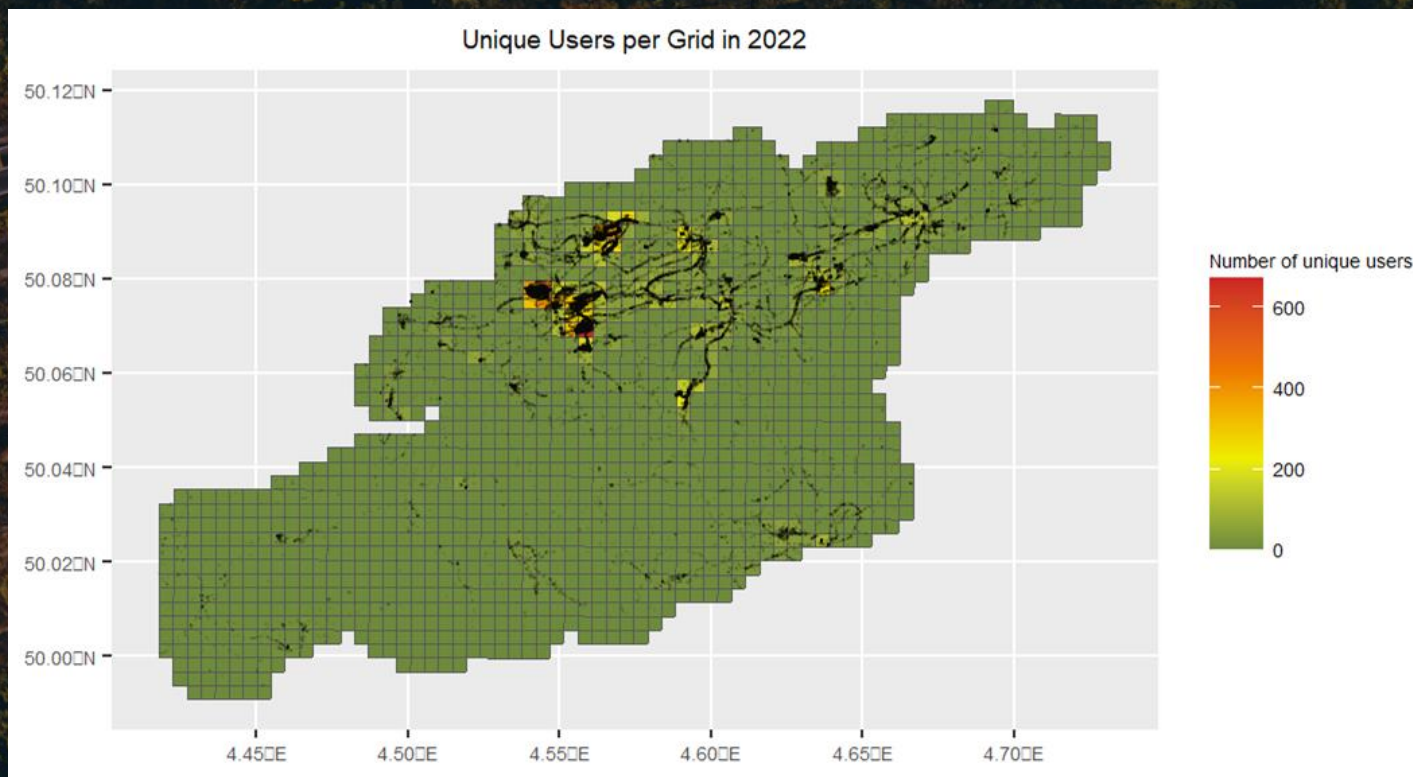


Humans



ABUNDANCE/PRESENCE

ACTIVITY PATTERNS



SOCIAL MEDIA DATA – STRAVA METRO



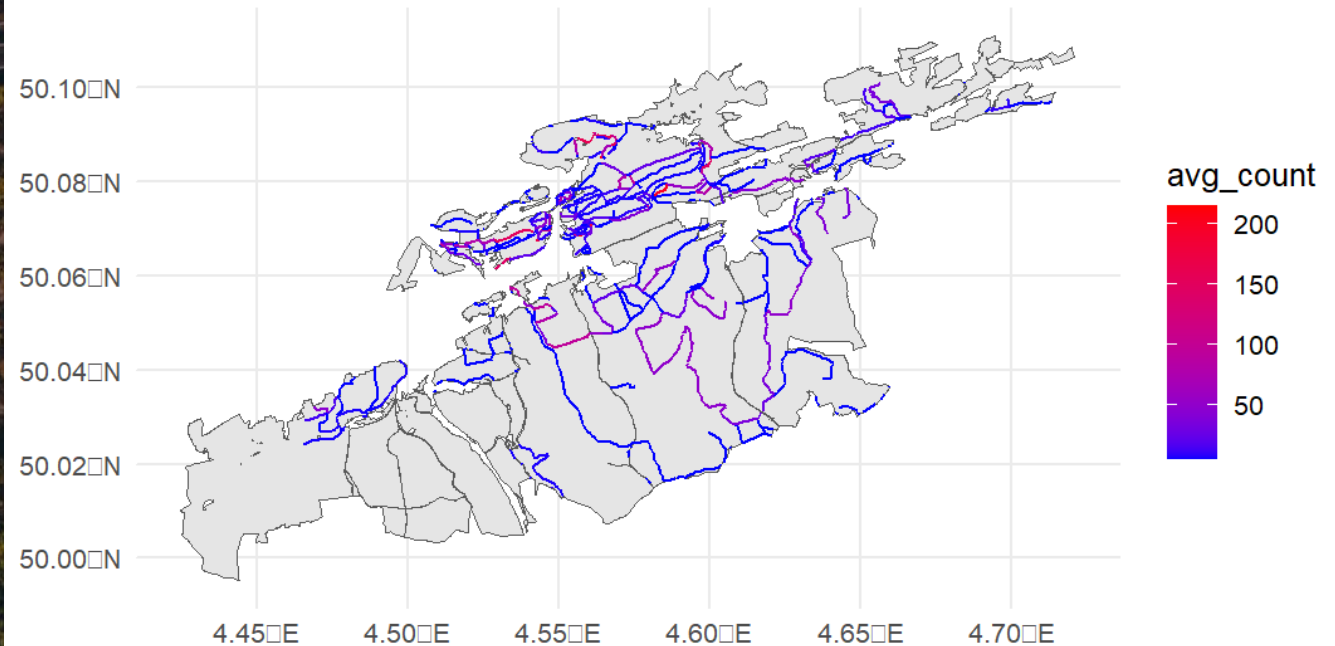
Humans



ABUNDANCE/PRESENCE

ACTIVITY PATTERNS

NPESEM Walking Trail Avg. Daily Counts August 2022
Redder color indicates higher average counts, bluer color indicates lower average counts



SOCIAL MEDIA DATA – STRAVA METRO



Humans



ABUNDANCE/PRESENCE

ACTIVITY PATTERNS

